

Unique Appearance Glazed Ceramic Vessel Candle Holder for  
Candle Packaging

## Sunny Glassware

We are the exclusive supplier of Nest Fragrance,  
Candle Lite, UGG etc popular brands,  
which 80% aroma vessels are from Sunny Glassware.



|                        | <b>Our Advantages</b>                                      | <b>Your Benefits</b>  |
|------------------------|--|---|
| <b>1. Experience</b>   | 26+ years glassware supplier                               | To be a long-term and reliable partner                                |
| <b>2. Quality</b>      | * Qualified QC inspection team                             | To create a famous brand rapidly                                      |
| <b>3. Certificates</b> | * ISO9001:2008<br>* Green & Social Compliance certificates | Quality assurance for consumers                                       |
| <b>4. Sample</b>       | * Sample ready within 10 days<br>* OEM/ODM orders welcome  | * Ensure qualified mass products<br>* Flexible custom design supports |

|                            |  |  |
|----------------------------|--|--|
| 5. <b><u>Design</u></b>    | * Strong design team<br>* 15 new items release monthly                   | * Unique design<br>*<br>Improve your market competitive power  |
| 6. <b><u>Capacity</u></b>  | * 2000 square meters factory<br>* 144 million pieces monthly             | * To meet your mass orders<br>* Shorten the delivery lead time   |
| 7. <b><u>Logistics</u></b> | We have our own<br><a href="#">SUNNY WORLDWIDE LOGISTICS(SZ) LIMITED</a> | * Seamless communication<br>* Avoid too many contact points<br>* Streamline management<br>* Save cost indirectly |

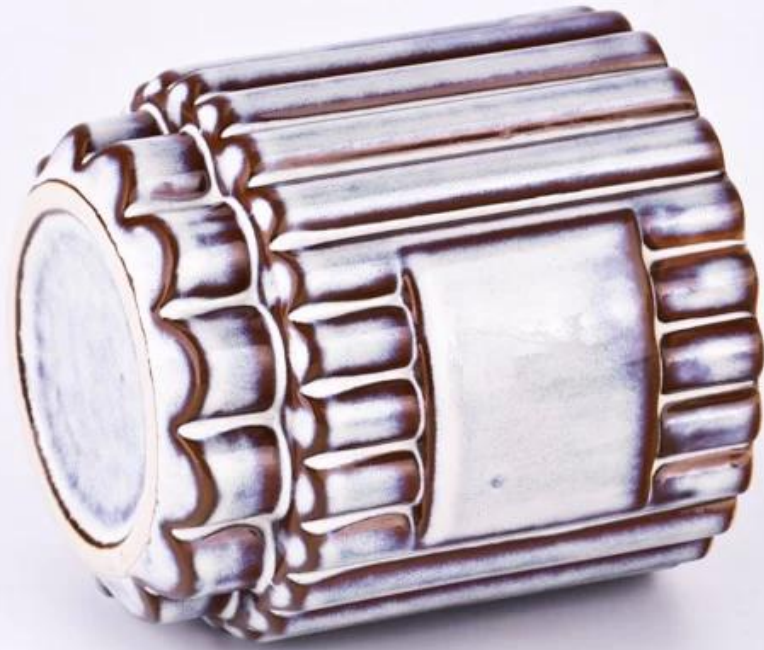
## Product Pictures











# MAIN PRODUCTS



**Glass Candle Holders**



**Ceramic  
Candle Holders**



**Ceramic  
Diffuser Bottles**



**Glass  
Diffuser Bottles**



**Perfume Bottles**



**Borosilicate Glass**



**Bathroom Accessories**

The annual quantity and launched speed on new products and designs can be compared with Zara.



### Quality Control

**Sunny Glassware follow ANSI/ASQ Z1.4-2008 Quality Control System strictly as following to prevent defective candle holders before delivery.**

**\* 4 rounds inspection procedure**

- (1). Inspect all raw materials before producing.
- (2). Check the mass produced sample comparing to client's signed sample.
- (3). Inspect semi-products during production
- (4). Check the finish products and the package before and after sending the warehouse.

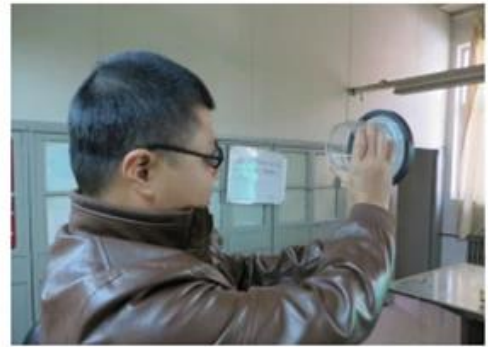
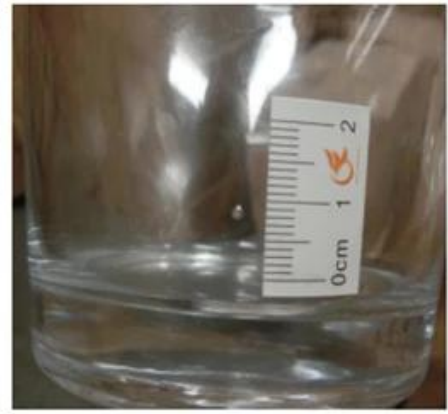
**\* 6 main check points**

- (1). Workmanship appearance



- (2). Quantity
- (3). Style, material, color
- (3). Packing & Loading
- (4). Marking/Label
- (5). Data measurement/function/field test
- (6). Made by skilled workers

## Onsite Inspection



## Packaging

# PACKING



We have Normal packing, PVC box  
Window box, carton box, pallet  
Color box, White box, ect.

of course, we can customize  
Individual gift box for you.



Carton



Wooden case



Pallet

# CERTIFICATIONS



## Company Information

[Shenzhen Sunny Glassware Co.,Ltd](http://www.sunnyglassware.com) was established in 1992.

We have been in glassware area for more than 25 years, as a professional manufacturer, we specialized in designing glassware, manufacturing glassware as well as exporting.

Our products lines range from handmade to machine made.

We already produced abundant products such as [glass tumbler](#), [borosilicate glass](#), vase, [glass bowl](#), [candle holder](#), [stemware](#), [bathroom accessories](#), [tableware](#), drinking glass, etc. all the daily use glassware, in total there are more than 4,000 different styles.

We have an excellent design team for innovative product creation, and strict QC team for quality assurance. OEM/ODM service are supported as well.



# SAMPLE ROOM

---

There are more than 5000 products in  
sample room of Sunny Glassware  
for your reference. No second Co. in China!



**Design team**



Award-winning team of designers has won the trust of many upscale brands like NEST Fragrance. The talented design team is unmatched in China.



# EXHIBITION



**Ceramic Factory**



**Innovative**

**Dedicate**

**Professional**





1、 *Prototype*



2、 *Pattermaking*

3、 *Platform Casting*



6、 *Painting*



5、 *Fixing*



4、 *Demolding*



7、 *Glazing*



8、 *Glazed Firing*



9、 *Packging*



# DEEP PROCESSING



Electroplating



Solid color glaze



Hand painting



Decal Printing



Stamping



Transmutation glaze



Screen Printing



Water Transfer Printing

## FAQ

1) Can you combine many items assorted in one container in my first order?

**Yes, we can. But the quantity of each ordered item should reach our MOQ.**

2) If any quality problem, how can you settle it for us?

**When discharging the container, you need to inspect all the cargo. If any breakage or defect products were founded, you must take the pictures from the original carton.**

**All the claims must be presented within 15 working days after discharging the container. This date is subject to the arrival time of container.**

3) why you choose us?

- 1. We have rich experiences in glassware trade for more than 20 years and the most professional team.**
- 2. We have 10 production line and can manufacture 15 million pieces per month, we have strict processes enable us to maintain an acceptance rate above 99% .**
- 3. We work with more than 1800 clients in about 80 countries.**
- 4. We offer professional one-stop world-wide logistics service.**

4) Can we get your free samples?

**Yes, you can. Our Samples are free for the customers who confirm order. But the freight of express is payed by buyer.**

5) What is your MOQ?

**Different kind products will have different MOQ, for some glassware in stock, small orders are acceptable.**

6) How many people in your R&D department?

**We have 5 professional designers, and they will develop 15 innovative designs monthly.**

7) Can you give me a discount about the price?

**The price depends on your quantity, if you want good price with small order, you can order more quantity in one time, and leave them in our warehouse, we will keep the goods for you until you need.**