

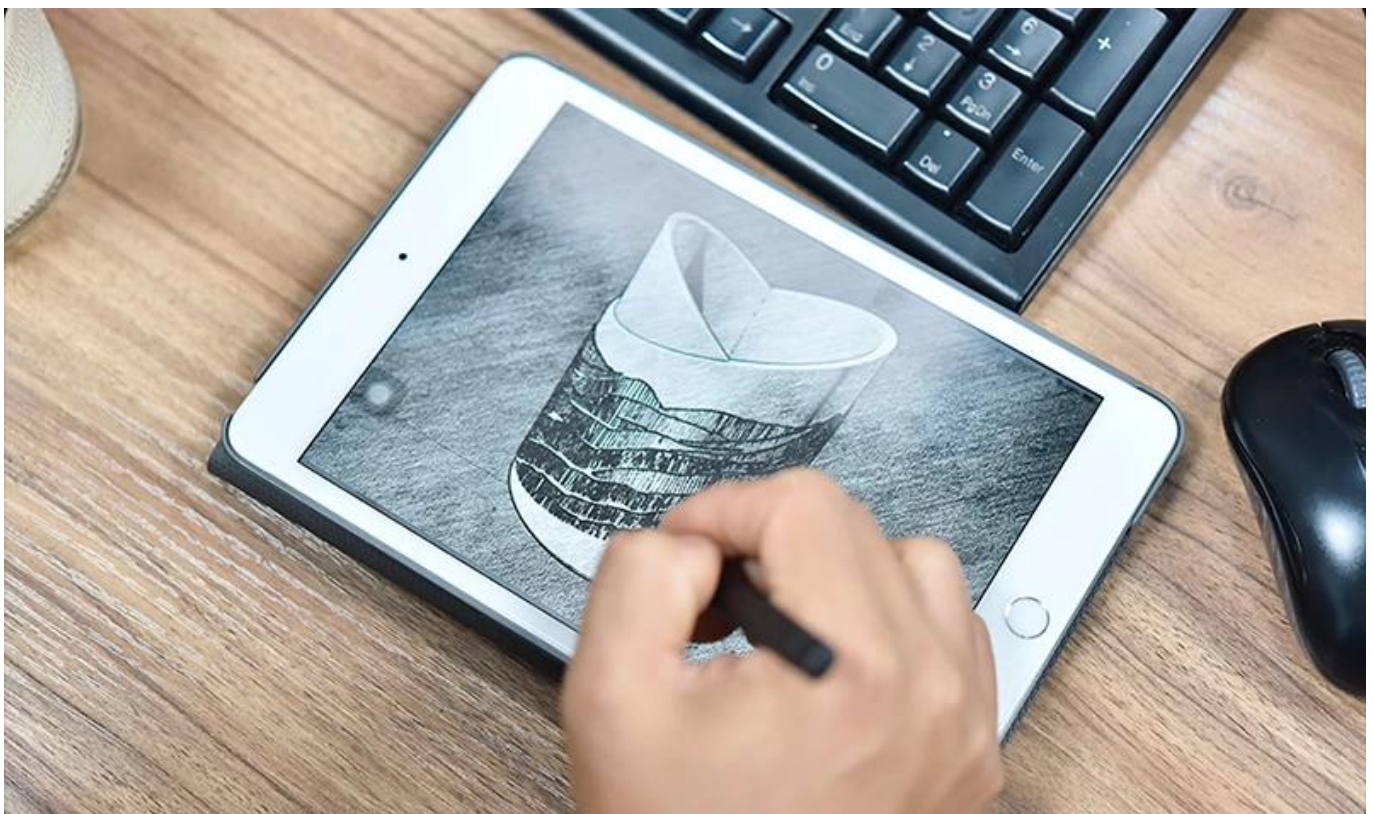
Glass candle jar 10 oz heart shaped for wedding

The votive candle holders designed with love **makes the world full of love**. Holding it in the palm of the hand and warming it in the heart.





Capacity	289ml
Weight	402g
Wall thickness	4mm

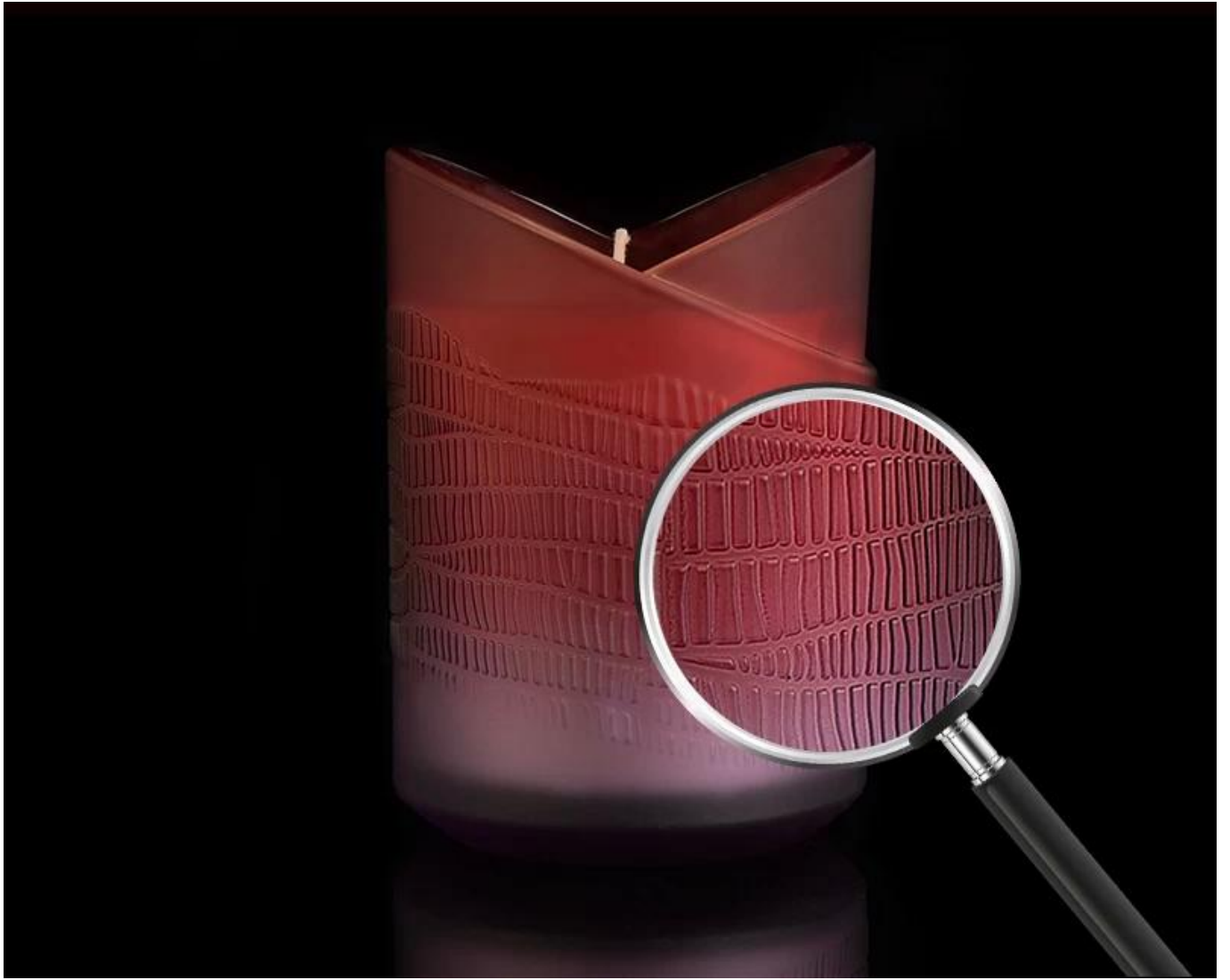


The unique design inspiration is derived from life and nature, and every piece of work needs to be drawn with countless sketches. Nature gives life to human being, and humans use their hard-working hands to give back to nature.



After repeated scrutiny by the designer, and with the help of 3D modeling technology to show a visual effect directly. Customers can see the samples printed by the 3D printer within 4 days, which can avoid unnecessary waste of resources before bulk production.







Every product of Sunny Glassware is made with ingenuity. From modeling, to the raw materials choosing, polishing, and annealing, all products are made by professional craftsmen with more than 5 years of skilled experience. In the pre-delivery inspection process, in addition to complying with the AQL inspection standards approved by the customer, Sunny Glassware adopts extra six steps for inspection to make each finished product unique and classic.

PS:

Sunny Glassware had applied the patent for our own designs they are protected by copyright and not allowed to show any other vendors to quote or copy. Meanwhile, it can be your private label product and won't supply others once you place order with defined qty.





REMINDER

MOQ IS REQUIRED

Contact us for more details