

7 oz glass jar wholesale

Sunny Glassware can not only perform OEM/ODM orders, but also help many brands from concept design to actual proudcts.

Focusing on luxury fragrance products in the latest 10 years, Sunny Glassware is the supplier of 80% fragrance brands in the United States.

Award-winning team of designers has won the trust of many upscale brands like NEST Fragrance. The talented design team is unmatched in China.



The characteristics of this candle jar with lids

1. lotus pattern glass jar
2. lotus pattern glass lid
3. Spraying black color with god dots on the candle holders and lids
4. Custom designs and decorations are welcomed.







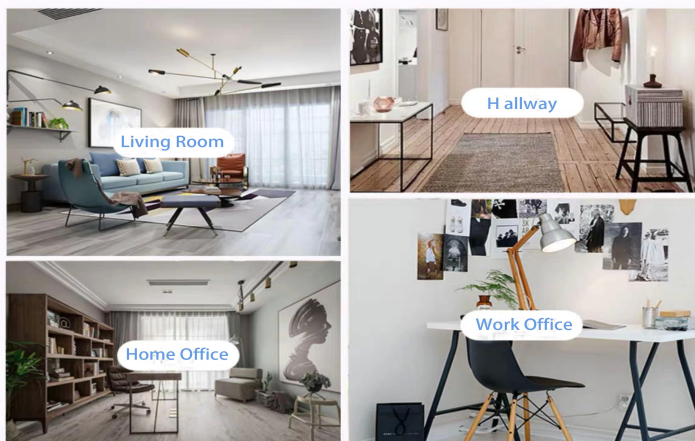




Life scene

- . Coffee or bar
- . Perfect for families, hotels or gardens
- . Sweet lover's gift
- . Every renovation

Range of the application



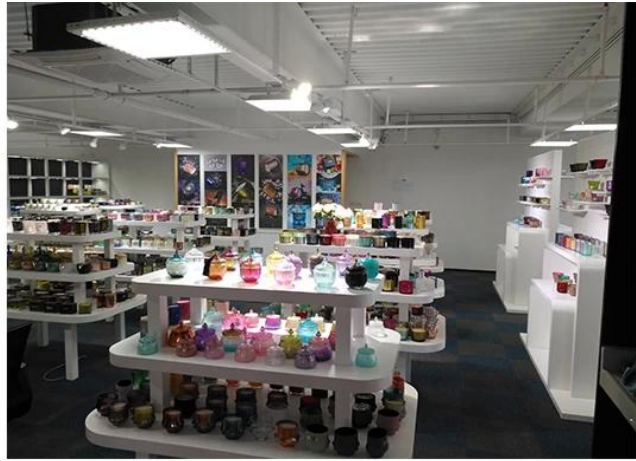
Office & Sample Room

We purchased an international office of 1,800 square meters in Shenzhen.



Sample room display

Meiyang Glass provides more than just **Shenzhen sample room has 5000 pieces** A wide range of options. He won a big card [Customer Reviews](#). Welcome to the Shenzhen office! The image is as follows **Just part of our design candlestick** Welcome to the Shenzhen office to find your favorite, it will bring you a lot of surprises, because it is difficult to find such another supplier in China.



Our certificate



ASTM



ISO9001-2015



Green and social
responsibility
Policy's statement

Factory Show

Below are pictures of major online transactions. For more factory information, please see: [Factory tour](#)

01 Factory





Surface Treatment

10+ production lines



□ Spraying



□ Engraving



□ Electroplating



□ Silk-screen



- Spraying
- Engraving
- Electroplating
- Silk-Screen

Other videos

The characteristics of the machine pressed glass candlestick

Open Machine Machine-Pressed Craft is usually used to make candlesticks with the following features: the upper diameter is lower than the bottom

- . Mass production with high MOQ
- . Embossed pattern on the outer wall
- . Maximum - Minimum thickness: 1.5~10mm
- . Thinner thickness: 4~30mm
- . Low cost model cost on the exterior wall.

Application method

1. Use it under the guidance of an adult
2. Rinse with water or boiling water before use
3. Do not touch the edge of the glass, try removing the bottom of the glass or the handle

Precautions

- Beer, wine, white wine, drinks or hot water may not be too full
- 2. To avoid hurting your child's hands, keep them out of reach.
- 3. Avoid falling, collision and strong impact
- 4. Not applicable to microwave ovens
- 5. To prevent it from rupturing, do not place it directly on fire.

More [Candlestick](#) Or any glass,

Please visit our website: [Http://www.okcandle.com/](http://www.okcandle.com/)

Or here can help you better understand us: [FAQ](#)