

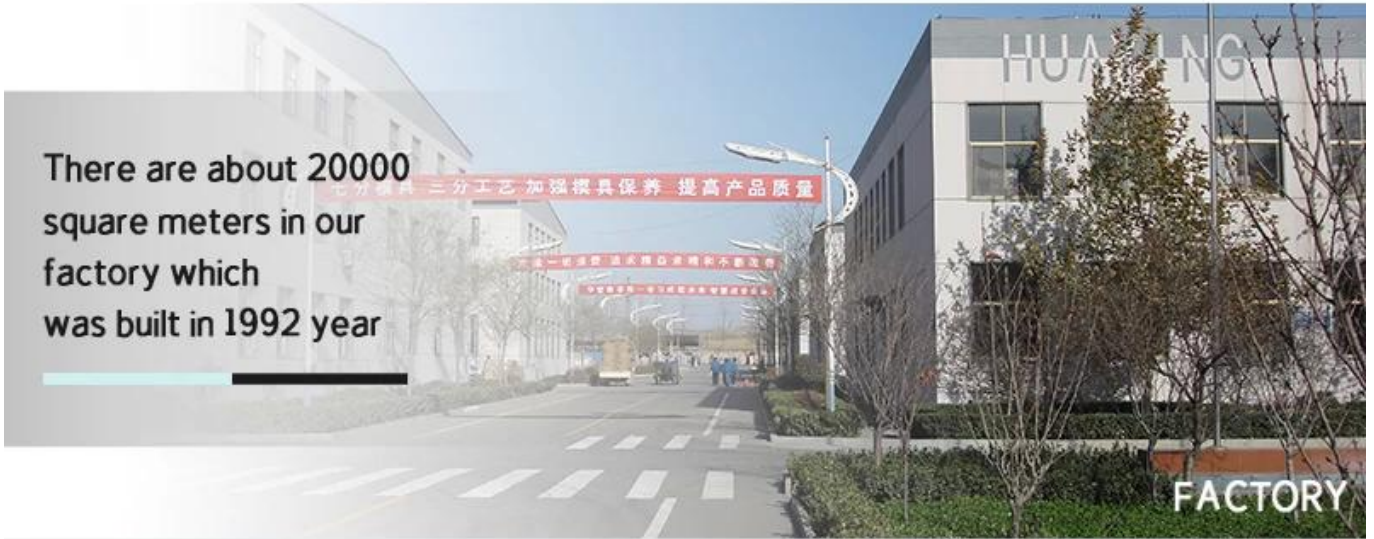






ABOUT FACTORY

There are about 20000 square meters in our factory which was built in 1992 year



PROCESS CRAFTS

We are strict in every procedure



polishing



Machine pressure



Blowing machine



The ranks of machine



Inspection



Annealing



Different From The Peer



20+ years freight history
and WCA members.



Own professional shipping company (Shenzhen Sunny Worldwide logistics)

PACKING



We have Normal packing, PVC box
Window box, carton box, pallet
Color box, White box, ect.

of course, we can customize
Individual gift box for you.

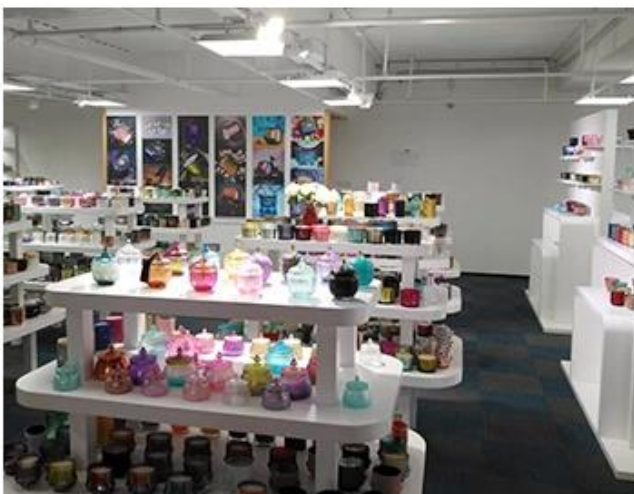


CERTIFICATES



SAMPLE ROOM

There are more than 5000 products in
sample room of Sunny Glassware
for your reference. No second Co. in China!



EXHIBITION

“

We have taken part in various exhibitions since 2002 year, like Shanghai, London, Las Vegas, Hongkong show.

”



4. 請說明以下各項之定義

4) 運費附加費?

運費附加費是指除基本運費外，因提供額外服務而收取之費用。Express 運費附加費包括

5) 最低MOQ?

MOQ (Minimum Order Quantity) 是指客戶每次下單必須購買之最低數量。

6) 貨物損耗率?

貨物損耗率是指 5 年內貨物損耗之數量與 15 年內貨物損耗之數量之比率。

7) 貨物損耗率?

貨物損耗率是指貨物在倉庫或運輸過程中，因各種原因（如受潮、霉變、蟲害等）而導致損壞或變質之數量與總數量之比率。

貨物損耗率之計算公式如下：